



Specifications

Arlu® (Argenta®)

Invisible Neo

Introducing our smart concealed hinges for a sleek, modern look





Upgrade your interior doors effortlessly with our smart concealed hinges and enjoy the perfect blend of functionality and modern design.

Transform your interior doors with our innovative concealed hinges. Designed to provide a seamless, flush appearance, our hinges ensure that not a single screw is visible, even when the door is open.

Practical Benefits

- **Wide opening range:** Suitable for doors that open up to 180°
- **Universal compatibility:** Ideal for both left-opening and right-opening doors.

Easy Installation

- **Quick and simple:** Mount and adjust the hinges swiftly in three dimensions, without having to remove the door.
- **Solo installation Made Simple:** Thanks to the innovative 'easy hook' design, the door can be installed by a single person—no extra hands needed.

Key Features

- **Elegant design:** Achieve a neat, streamlined look for your doors
- **Invisible screws:** Enjoy the aesthetics of your doors without any visible screws
- **Versatile formats:** Available in three sizes—S-5, M-6, and L-7—catering to various door types and preferences.



Weight Table

Type hinge Number of hinges	Door Width	invisible neo S-5		invisible neo M-6		invisible neo L-7	
		2	3	2	3	2	3
Max. door weight according to door width	730	75 kg	95 kg	95 kg	115 kg	110 kg	160 kg
	830	70 kg	90 kg	90 kg	110 kg	105 kg	155 kg
	930	65 kg	85 kg	85 kg	105 kg	100 kg	150 kg
	1030	60 kg	80 kg	80 kg	100 kg	95 kg	145 kg



3 Sizes & 11 Finishes



Matt Chrome

- **S5** 70000061
- **M6** 70000062
- **L7** 70000003

Glossy Chrome

- **S5** 70000066
- **M6** 70000067
- **L7** 70000068

Stainless Steel

- **S5** 70000069
- **M6** 70000070
- **L7** 70000071

Classic Bronze

- **S5** 70000095
- **M6** 70000096
- **L7** 70000097



Bronze

- **S5** 70000139
- **M6** 70000141
- **L7** 70000143

Copper

- **S5** 70000156
- **M6** 70000174
- **L7** 70000175

Polished Brass

- **S5** 70000093
- **M6** 70000092
- **L7** 70000065

Tar Black

- **S5** 70000106
- **M6** 70000107
- **L7** 70000108



Black Umber

- **S5** 70000109
- **M5** 70000110
- **L7** 70000111

Dark Bronze

- **S5** 70000140
- **M6** 70000142
- **L7** 70000144

White (MAT 9016)

- **S5** 70000072
- **M6** 70000073
- **L7** 700001074



Technical Details

	Invisible neo S-5	Invisible neo M-6	Invisible neo L-7
Material:	Zamak	Zamak	Zamak
Door thickness	Min. 33 mm	Min. 36 mm	Min. 40 mm
Door thickness with max. front panel	35 mm	40 mm	46 mm
Overall depth	26.5 mm (frame) / 30 mm (door)	30 mm (frame) / 32 mm (door)	30 mm (frame) / 36 mm (door)
Dimensions (L x W)	120 x 25 mm	140 x 28 mm	170 x 32 mm
Weight capacity guide ¹ 3 Hinges	80kg	100 kg	150 kg
Installment & adjustment	Easy-Hook	Easy-Hook	Easy-Hook
Height adjustment ¹	-2.5 +2.5 mm	- 3 + 3 mm	- 3 + 3 mm
Width adjustment ¹	- 3 + 4 mm	- 3 + 4 mm	- 3 + 4 mm
Pressure (depth adjustment)¹	- 1 + 1 mm	- 1.5 + 1.5 mm	- 1.5 + 1.5 mm
Max. front panel (cladding) Size	5 mm	6 mm	7 mm
Fire resistant ²	E30, EI230, EI130, EW30	E60, EI260, EI160,	E60, EI260, EI160, EW60
CE marking	2 7 3 1 1 4 0 10	3 7 4 1 1 4 0 11a	4 7 5 1 1 4 1 12a
Screw dia.	SPAX – 72 dia: max. 4.5	SPAX – 72 dia: max.5	SPAX – 72 dia: max.5

¹ = Based on a reference door of 1000 x 2000 mm

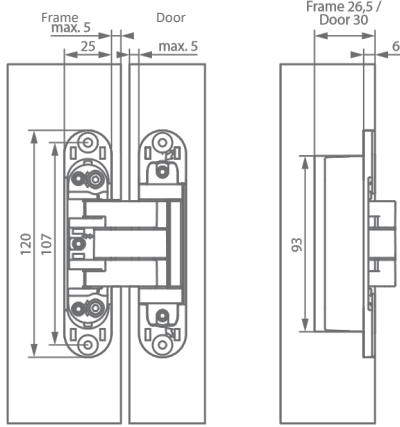
² = Fire resistant according to standard EN1634-1: 2008 and classified according to EN13501-2:2007 for use of wooden door with wooden door frame, and for wooden door with stainless steel frame.

Quantity of hinge required for a standard 2040 mm door.

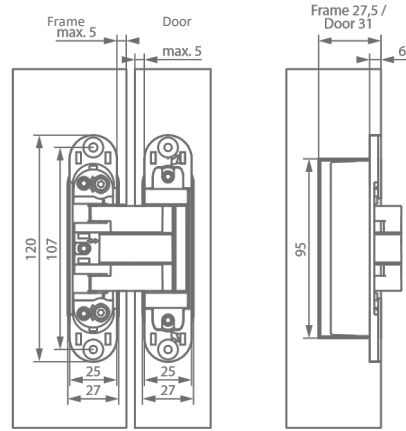
Please make adjustments according to the height of the door as well as considering the weight.



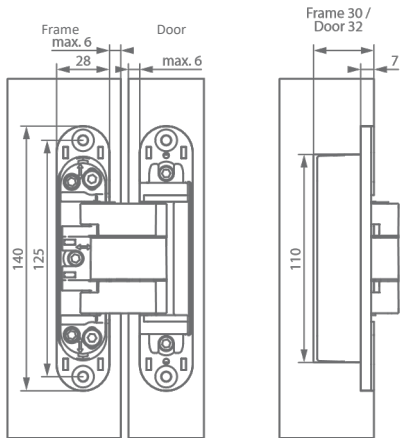
Technical Drawings



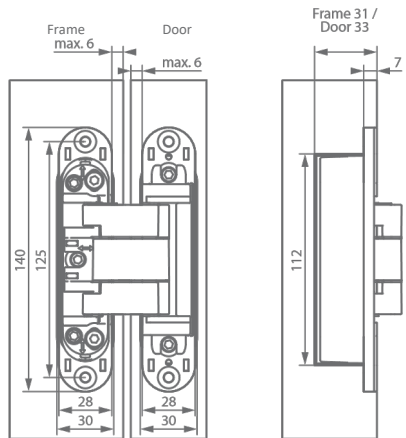
invisible neo S-5



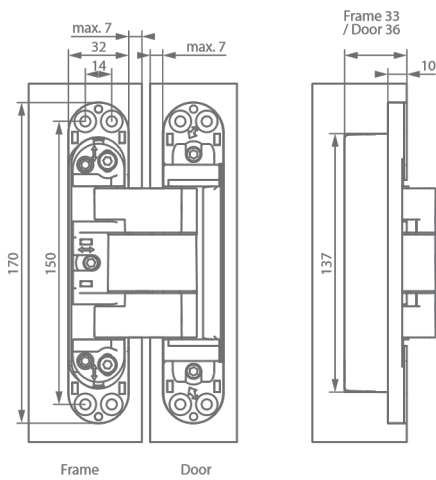
invisible neo S-5 fire resistant



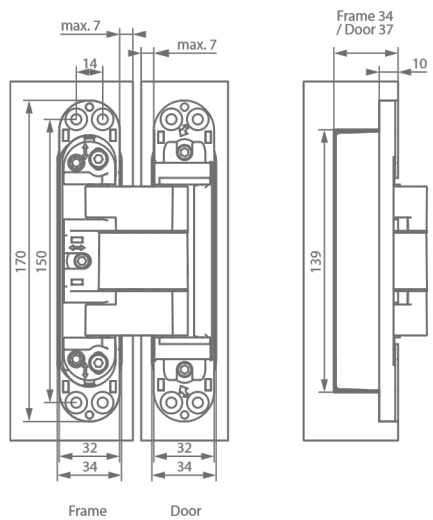
invisible neo M-6



invisible neo M-6 fire resistant



invisible neo L-7



invisible neo L-7 fire resistant



1. Router Template FIS Basis Set



2. Router Template for ARGENTA Invisible



3. Router Guide



4. Groove



Hinge Template

For: Argenta® Invisible Neo

Fast, easy and efficient installation of the concealed hinges using 247WOOD Router Jigs

What?

The template frame sets up the position of the hinges on the door & frame allowing for consistent measurements.

Easy and Fast

These invisible hinge mills are made from a quality technical plastic and can be used loosely as well as on a rail. By means of a steel insert you can fill in both the deepened part and the sight part in a fixture, this saves time and reduces the chance of errors.

Kit Includes:

1261 | FIS Basis Set
Two Template Frames,
Aluminium Full Length, Stop Block

1261 | 2 x Router Template
Order additional routing hinge templates (1037) for doors that have more than 2 hinges.